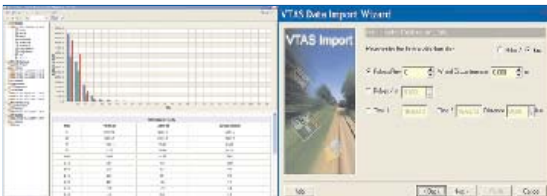
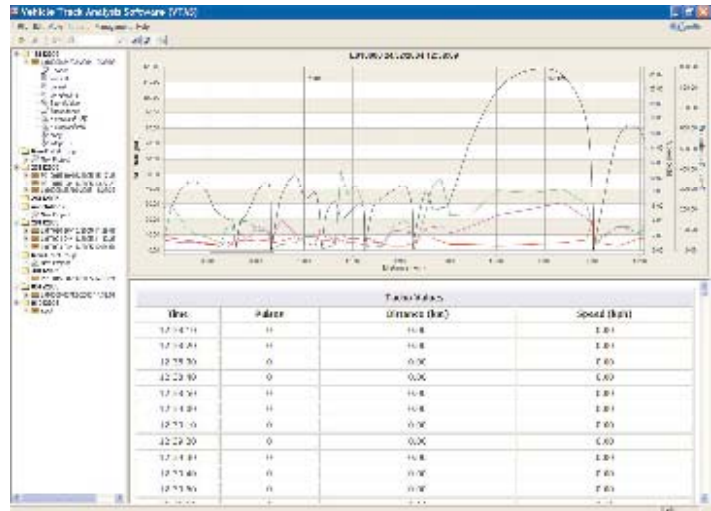




Donfabs & Consillia's Vehicle Track Analysis Software (VTAS) has been designed to meet the requirements of today's Civil and Permanent Way Engineers. Data collected with the range of Consillia railway measurement equipment can be displayed, stored, manipulated and reports can be easily produced. In addition to journey ride data, custom information such as annotations or distance markers can be overlaid.

## VTAS Vehicle Track Analysis Software



### Features

- Journey Visualisation
- Graphical and Tabular
- Superimpose Journeys
- Time or Distance Mode
- Exceedence Display
- Import / Export Functions
- Custom Plug-ins
- Specific Reporting
- Single user or network
- Annotation Overlays

For more information, please contact the Railway Sales Department at Donfabs & Consillia

Email: [sales@consillia.com](mailto:sales@consillia.com)

### User Interface

The screen layout provides a global overview of all the data collected with specific views available to display areas of interest. To ensure ease of use, a familiar "explorer" view displays three different views of the data, the tree view, chart view and data view, enabling easy selection of data for detailed analysis.

### Distance or Speed

When an "L" model Macminder or Mactrack system has been used with a tacho input, VTAS can display the data set against distance. Using a simple setup wizard the distance calibration can be added.

### Distance Post Overlay

An important feature of VTAS is the ability to overlay a distance marker onto a journey data set. This provides a true distance annotation overlay which reflects actual position on the track with respect to track side markers.

### Custom Plug-Ins

Using a plug-in system specific modules can perform dedicated tasks for specialised or custom applications. Examples include special reports, testing pass/fail criteria and specialised statistics.

### Data Import and Export

Data is imported via direct connection to the measuring instrument using an import wizard. It is displayed as a folder in the tree view, enabling easy selection of the data set for further analysis or reports.

Data stored within the VTAS database can be exported in a CSV format or to a preformatted Crystal report. Custom reports can be compiled upon request.

### PC Requirements

Its multi-tier system with built-in scalability allows VTAS to run from any laptop or multi-user system that utilises the standard Windows XP package.

# Technical Specification

## Equipment Supported

Macminder, Mactrack

## Hardware Interface

Enhanced parallel port for direct download to PC

## Chart Display

Data visualisation and analysis tool providing -

- Multi channel overlayed trace display in vertical and horizontal scrolling window, Zoom In and Out, Pan facility
- "Datatip" technology allowing visual feedback of actual accurate data values
- User friendly tree structure for easy selection of traces and data sets
- Overlay and building of grouped traces, "Journey"
- Histogram statistics modes
- Printing to any windows compatible printer or plotter
- Copy as metafile / bitmap into a variety of compatible programmes

## Data Display

Alphanumeric readout of captured data providing -

- Export of selected data values or complete file
- Copy / Paste data as XML or CSV into a variety of compatible programmes
- Printing to any windows compatible printer or plotter

## Database

VTAS utilises SQL database for storage of all data sets for easy retrieval and reporting.

- Storage of all data sets
- Delete single or multiple data sets
- Rename, Move, select for Display, Archive and Multiple Selection facility
- Fully expandable to harness the additional scalability offered by Microsoft SQL Server

## Reports

Utilises industry standard Crystal Reports® reporting engine providing -

- Custom reports
- Print / Print Preview report
- Email / export report

## PC Requirements

- Pentium III 750 MHz processor (minimum)
- 256MB RAM (minimum)
- 1GB free Hard Disc space (minimum)
- Microsoft Windows 2000 / XP with the latest Service Pack installed
- Super VGA Graphics Card (800 x 600 pixels)
- CD Rom Drive
- VDU
- Mouse
- Keyboard
- Printer Port